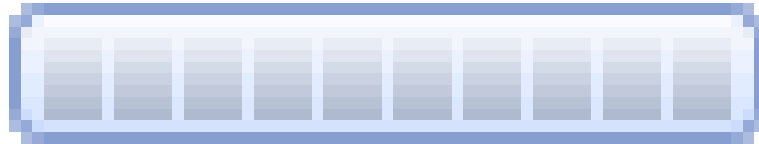


LOADING . . .





Safety Services

Safety Services care
about your health

Health care
Re-imagined

Paderno d'Adda, 27 Maggio 2006

Finali Italiane Imagine Cup 2006

Who we are

- Mauro De Biasio
- Gianluca Demartini
- Monica Noselli
- Denis Roman Fulin

What we do

- Mauro (*Draiden*) – BSc Student at University of Udine – UI Desing Engineer
- Gianluca (*TheMiddelers*) – PhD Student at University of Hanover – Visionary Engineer
- Monica (Molly) – BSc Student at University of Udine – Mascot Engineer
- Denis (*Dwe*) – BSc Student at University of Udine – Project Leader

Safety Services

- Pocket PC Application that assists the user during her daylife
- It guides the user to the best places for her
- It provides health advices to the user
- **It cares about the health of the user!**
- It simplifies the user's life
- The user can think to something else

Motivation

- Sara uses to travel around the world and she is diabetic
- SS knows her diseases and what she likes to do and to eat
- SS can guide her to the best restaurant and reccomend her the best dishes

What SS is

- SS uses a **Social Enviroment**. It uses information about its user and all the other users
- SS is a **Reccomender System**. It can advice and guide the user to the best places
- SS is **Context-Aware**. It gets the right application in each context
- Some example are: restaurants, pharmacies, air conditioned shops, open doctor's ambulatories, termal swimming pools, gyms, beauty farms.

What SS is not

- SS is not a navigation system. It advises the user to meet her needs!
- SS is not a single application. Different applications are deployed when are needed
- The social system makes it works better
- SS is not OnDemand. It is OnNeed! It decides what is better for the user. The user has only to trust it!

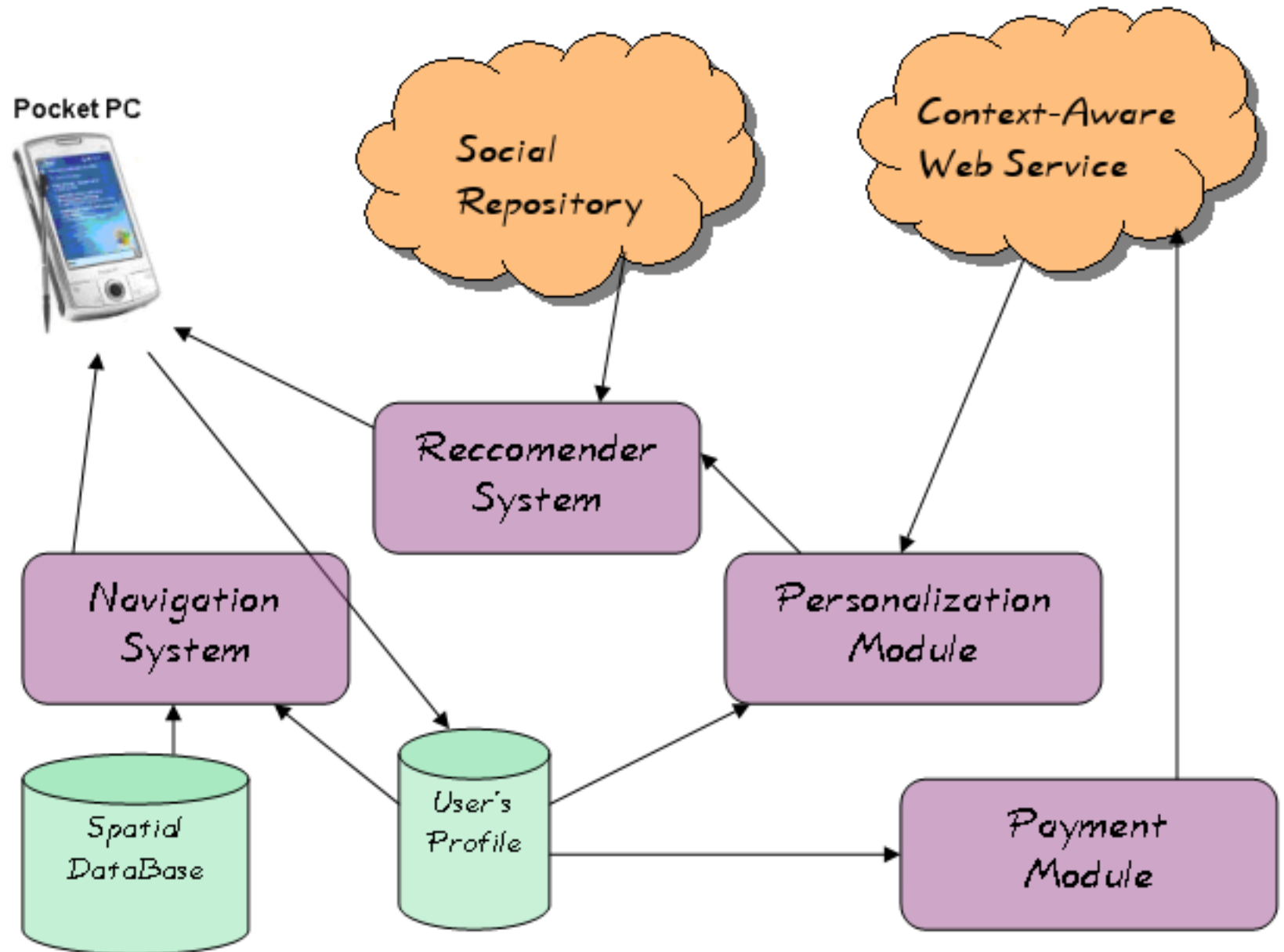
Safety Services Architectural Design

- SS Components (on Pocket PC):
 - User's profile & Electronic Health Record (EHR)
 - Spatial DB
 - Personalization Module
 - Application Keeper
 - Payment Module

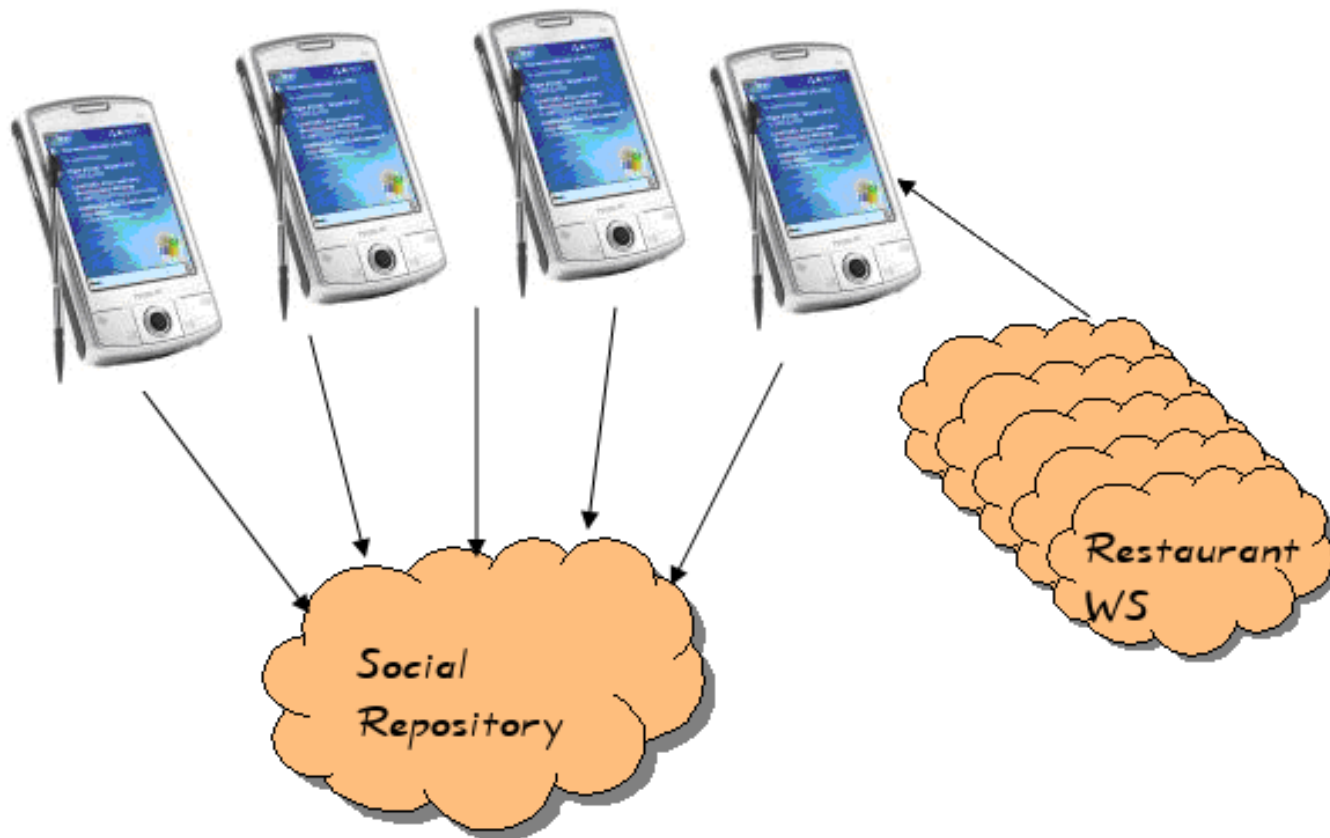
Safety Services Architectural Design

- SS Components (out of the Pocket PC):
 - Social Repository
 - Context-Aware Web Services

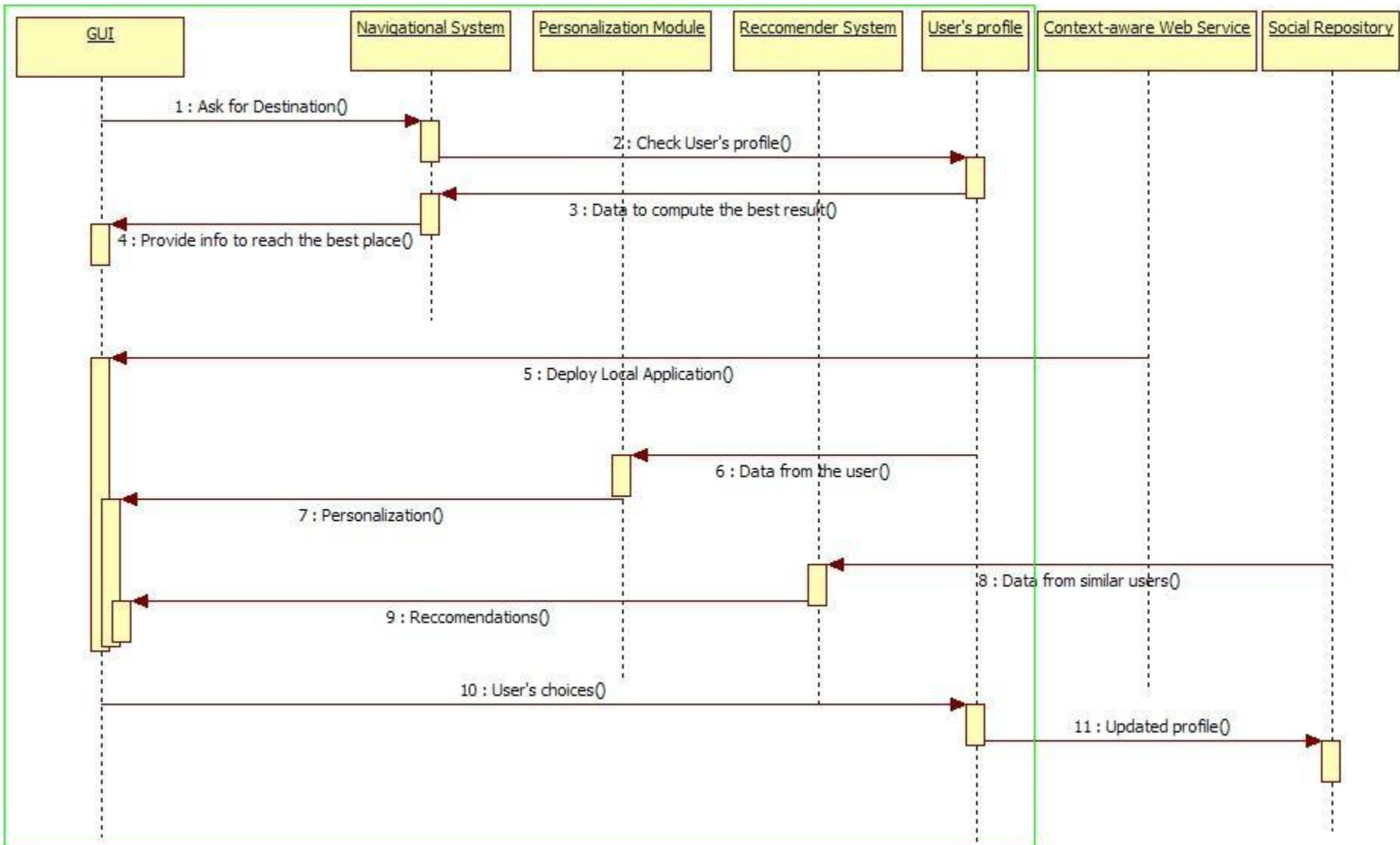
Single User Point Of View



Community Point of View



UML – Sequence Diagram



Conclusions

- SS helps the user to achieve a healthier life
- SS is easy to use. The user has only to trust it
- The system is a collection of already existing modules. The task is only to merge all the components

Thanks for your attention!

Demo

+

Q&A